

LA ART SHOW 2015

HISTORIC | MODERN | CONTEMPORARY

Large Grouping of Chinese Contemporary Galleries Featured at LA Art Show

LOS ANGELES, CA (January 14, 2015) – The largest grouping of from Japan outside of Asia will be on view at the upcoming LA Art Show, taking place at the Los Angeles Convention Center from January 14-18, 2015. Featured galleries include: ME Art Gallery, Duke Art Gallery, CM2 Space, Neu Art Gallery, Coco (Mingjia) Art Gallery, Trustwin Art Gallery and Impressions Oriental.

Gallery Highlights include works by Guo ji Jiang. His photo documentary style pieces depicts from his God of War series depict the more than 500 Roban that were destroyed in the magnitude 8 earthquake that hit Wenchuan, Sichuan Province. With a death toll numbering close to 70,000, the earthquake destroyed a huge swath of land that was once fertile and lush. It also destroyed more than 200 Buddhist and Taoist temples, some dating to the Ming dynasty.



Guo spent more than 6 years recording what happened after the Wenchuan earthquake. In a photo documentary style, he created a narrative, not about the the damage for the people, but a reflection of the decline of Chinese culture. The economic development of China has created so many opportunities. It is much like the vivid color of the buddhist status in the photos, but the fact is that people do not see the collision and the loss of culture.

ME Photo Gallery will present works by **liu Dadi**. A child of China's Cultural Revolution, Dadi has an appreciation of life, reflected in his latest works that capture both the lightness and darkness within people. He applies a 130-year old printing technique, using Silver Gelatin Liquid Emulsion.

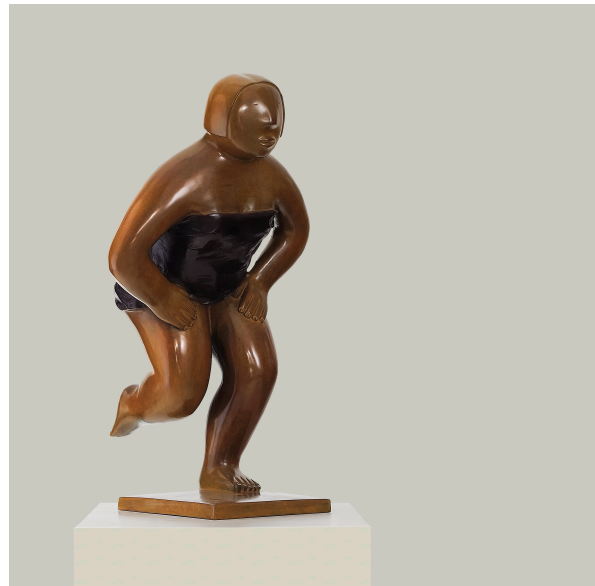


Left Tingly Wong, Right Ilu Dadi

CoCo Mingjia (right) will showcase works by Xie Aige. Xie's sculptures have been exhibited and collected throughout the world. Her yoga series has gained international acclaim.



Trustwin Gallery will feature works by Li Guanglin (left). Li Guanglin's paintings about Tibetan are void of political conflict, focusing instead on the human condition and religion.



NO.8 YOGO 39-32-55CM BRONZE 2009

The LA Art Show takes place from January 14 – 18, 2015 concurrently with the Los Angeles Jewelry, Antique & Design Show at the Los Angeles Convention Center, South Hall 1201 Figueroa Street, Los Angeles, CA 90015. For additional information about the LA Art Show, please visit www.laartshow.com.