



MODERN +
CONTEMPORARY

JANUARY 19-23
2022

The Most Comprehensive International Contemporary Art Show in America

LA Art Show News

DIVERSEart LA 2022 and the Role of Art in Addressing Climate Change

We're proud to present a timely and important edition of DIVERSEartLA curated by Marisa Caichiolo, as part of the programming for the LA Art Show 2022 when we return live this week at the LA Convention Center. The driving theme of year's DIVERSEartLA program is focused on advancing a dialogue about the global climate crisis and potential solutions. Here are snapshots of this year's DIVERSEartLA exhibitions:

Dox Contemporary- Prague / Czech Center New York & The General Consulate of The Czech Republic in Los Angeles present THE SIGN (part of the Real News series)

A site-specific installation by: Swen Leer

The installation, The Sign, plugs into this a-priori factuality by mimicking the format of iconic freeway signage, while communicating an unexpected message: "Your children WILL hate you – eventually". The text is a speculation about the future of our society as well as a deeply disturbing existential thought.



**MUSA Museum of the Arts of the University of Guadalajara
and MCA Museum of Environmental Science present
THE OTHER WATERFALL & CHAPALA ALSO DROPS
ITSELF by Claudia Rodríguez**

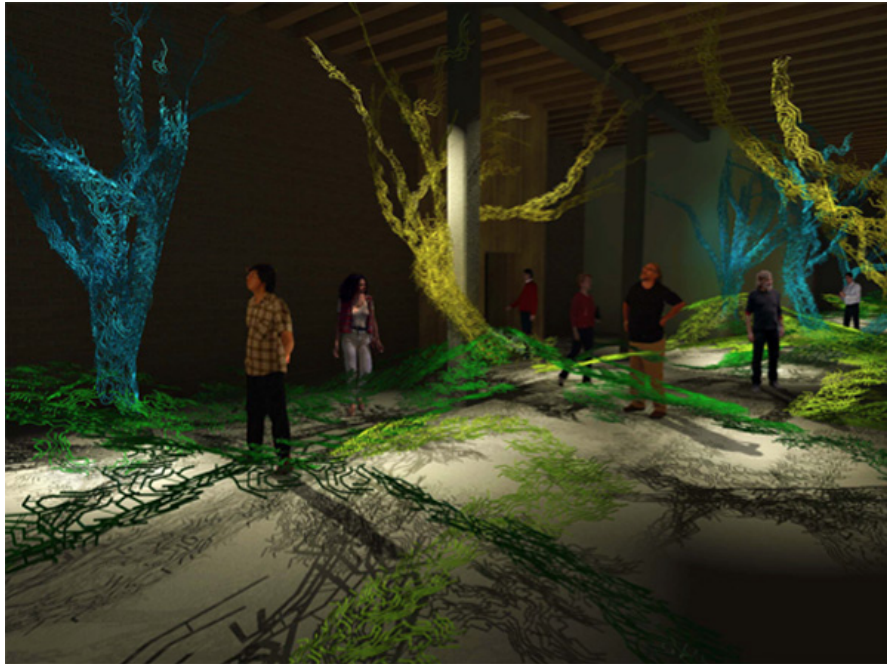
Two installations by the artist Claudia Rodríguez: La otra cascada –The Other Waterfall – and Chapala también se-a-gota – Chapala also Drops Itself – reflect the impact of scarce and contaminated water on the state of Jalisco, Mexico in recent decades.



**MUMBAT Museum of Fine Arts of Tandil & Museum of
Nature and Science Antonio Serrano of Entre Rios
Argentina present THE EARTH'S FRUITS by Guillermo
Anselmo Vezzosi**

Curated by Indiana Gnocchini

In their dreamy immersive installation, the artists invite us to reconsider our role as a part of nature – a complex whole in constant mutation and adaptation. It challenges us to examine our most recondite thoughts, inducing us to question ourselves about our identity and our links to our habitat, pushing us to act on new imaginaries and assume the position of a protagonist.



Museum of Nature of Cantabria Spain presents Our turn to change by Andrea Juan and Gabriel Penedo Diego

This video-installation appeals to the viewer through images, to awaken to an increasingly worrying reality. Drop by drop, large amounts of ice are lost every second. The poles are melting while we continue with our lives, with our dreams, as if it could never affect us, Meanwhile, vast frozen expanses have already been lost. The Arctic is at minimum levels, Antarctica has lost ice shelves, glaciers have retracted, ocean levels continue to rise, forest fires, droughts, tidal waves, floods increase in intensity. Through imagery, the film challenges us to take action.



The Skid Row History Museum & Archive & The Urban Voices Project, Los Angeles Present Recognizing Skid Row As A Neighborhood: Skid Row Cooling Resources

Curated by Tom Grode

Recognizing Skid Row As A Neighborhood is how DTLA 2040 (Department of City Planning) formally presented Skid Row this year to Los Angeles City Hall as part of updating the Downtown Community Plan. Skid Row is a dynamic, primarily African American, residential neighborhood – not a problem to be fixed. A resident of a downtown Los Angeles neighborhood adjacent to Skid Row, curator Tom Grode is deeply engaged with Skid Row as a powerful arts community, in particular a part of the Los Angeles Poverty Department (LAPD) and Urban Voices Project.



TAM Torrance Art Museum presents Memorial to the Future: A collaborative artwork concerning Climate Change 2022

Curated by Max Presneill

This sculptural work addresses the utopianism of modernity that led to scientific and technological developments resulting in forms of capitalism that have endangered the planet, manifesting systematic exploitation, excess and greed. Based on the conceptual architectural structures of Brutalism, this large-scale architectural sculpture was built by artist Daniela Soberman. A group of artists will be invited to present photographs printed on vinyl to be placed on the structure. The artwork will have an interior the visitor can enter.



Raubtier Productions & Unicus present Environmental Digital Experience by A. Ordoñez

Curated by Marisa Caichiolo

Climate change is a significant threat that has raised concerns all over the world. From shifting weather patterns to rising sea levels, the impact of climate change is global, and at an unprecedented scale. An immersive digital installation projected inside a spherical structure, this exhibit takes the viewer through a vision of the changing environment, intending to bridge the gap and instill a sense of urgency about the threats facing our planet so we can mend the issues that divide us and come together to heal the Earth.



Join us this week at the LA Art Show for DIVERSEartLA and much more exciting and thought-provoking art from around the world! For updated DIVERSEartLA programming, please visit: <https://www.laartshow.com/diverseartla/>

COVID protocols at the LA Art Show: Protecting Your Health and Safety

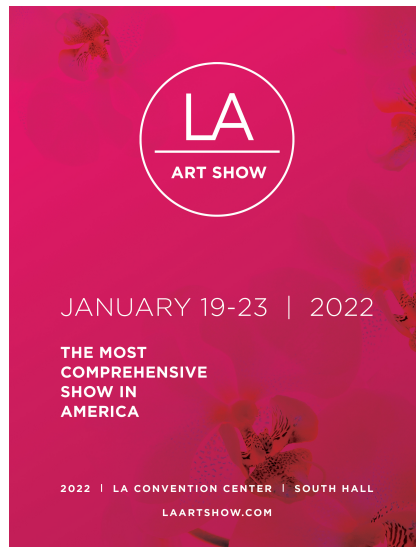


The LA Art Show will observe the latest COVID protocols to keep everyone safe. All visitors must show proof of vaccination or show a negative 48-hour PCR or 24-hour Rapid test at admission. In addition, all visitors must wear masks on the premises. For your convenience, a Same-Day Health rapid testing facility is located outside Staples/Crypto.com Arena, within walking distance of the Convention Center.

Find out more about LA Convention Center Covid-19 requirements here:

<https://www.lacclink.com/covid-19>

Don't Wait! Get your Tickets to the LA Art Show Now!



The LA Art Show returns January 19–23, 2022

Why wait in line? Get your advance tickets for the LA Art Show 2022 today! We look forward to seeing you when the most comprehensive contemporary art show in America returns to the LA Convention Center January 19 to 23, 2022.

Get your tickets now!

To purchase tickets, visit:

[LA Art Show Ticket Center](#)

ADD TO YOUR CALENDAR:

GOOGLE

APPLE ICAL

OUTLOOK

OUTLOOK.COM

We are honored that St. Jude Children's Research Hospital® will return for a seventh year as the exclusive Charity Partner of the LA Art Show in 2022. St. Jude Children's Research Hospital® is leading the way the world understands, treats and defeats childhood cancer and other life-threatening diseases. The LA Art Show donates 15 percent of proceeds from ticket sales to St. Jude Children's Research Hospital®. Your ticket purchase will support St. Jude in its lifesaving mission: Finding cures. Saving children®.

Benefiting



We're excited to see you when the LA Art Show returns! For more information please visit:

www.LAArtShow.com

Follow the LA Art Show on Instagram



The LA Art Show returns **January 19—23, 2022**.

Follow us on **Instagram**: [@LAArtShow](#) | **Hashtag**: #LAArtShow

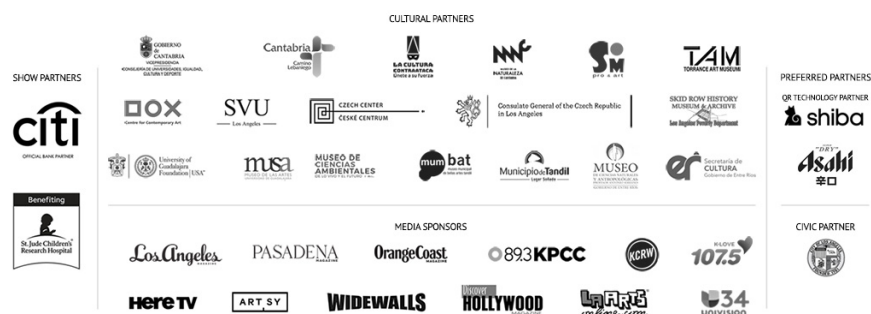


Please join us when we return for the 2022 edition of the
LA Art Show. The LA Art Show will run **January 19—23, 2022**
at the LA Convention Center, South Hall.

Powered by



2022 PARTNERS



Copyright © 2022 LA Art Show, All rights reserved.

[Update or Unsubscribe](#)