



MODERN +
CONTEMPORARY

JULY 29 - AUG 1
2021

The Most Comprehensive International Contemporary Art Show in America

LA Art Show News

Gallery Highlight: The Spaceless Gallery

Félicie d'Estienne d'Orves:

COSMOGRAPHIES: Pleiades, Sirius, Sagittarius A*, 2019

This year, we're pleased to welcome the Spaceless Gallery from Paris, France at the LA Art Show. The gallery will be showing *Félicie d'Estienne d'Orves: "Cosmographies:" Pleiades, Sirius, Sagittarius A*, 2019.*



"The Spaceless Gallery pushes the boundaries of the traditional white cube gallery and offers thanks to the LA Art Show, presenting an immersive cosmic experience with Félicie d'Estienne d'Orves that goes beyond the mere booth show," said Beatrice Masi, Paris-based director and curator of the Spaceless Gallery. Operating through a circuit of innovative pop-up locations all over the world, the Spaceless Gallery pushes the boundaries of the traditional white cube space to provide an evolving experience for artists and viewers alike."



Cosmographies is a Land Art project consisting of an immersive cosmic installation with laser lights that use geometry to track space and define a specific position within the cosmos. From high power laser pointers, the beams trace lines connecting specific sites to celestial objects at great distances, like the cold dark cloud Nebula LDN 1768 and its stellar nurseries, as observed in March 2016 by the Atacama Large Telescope Millimeter/submillimeter Array (ALMA) observatory.

Memorial Day Advance Tickets On Sale Now!

This Memorial Day weekend get a jump on your summer plans with advance tickets to the LA Art Show! The most comprehensive contemporary art show in America returns to the LA Convention Center as a live in-person event, July 29 - August 1, 2021. Tickets are on sale now!

Join us when the 2021 LA Art Show kicks off the live art season! This year's show features 75 galleries from around the world, presenting an extraordinary selection of painting, sculpture, works on paper, installation, photography, design, video and performance in more than 180,000 square feet of exhibition space, as well as an outdoor area for the first time. Featured artwork is available for purchase.

Returning this year, [DIVERSEartLA](#) will present a dynamic program of film/video art, performance and event documentation focusing on the contributions of women artists at international museums and institutions.

To ensure a safe live event in compliance with local health requirements, the 2021 LA Art Show will implement reduced capacity and social distancing protocols. All visitors MUST complete a mandatory health screening form from the LA Convention Center before entering the exhibition hall. Tickets On Sale Now: [LA Art Show Tickets](#)

The LA Art Show donates 15 percent of proceeds from ticket sales to St. Jude Children's Research Hospital®. Your ticket purchase will support St. Jude in its lifesaving mission: Finding cures. Saving children®.

To purchase tickets, and for more information, [click here](#).



**Enjoy your 3-day
weekend!**

**LA Art Show Tickets
On Sale Now**

Museum Highlight:

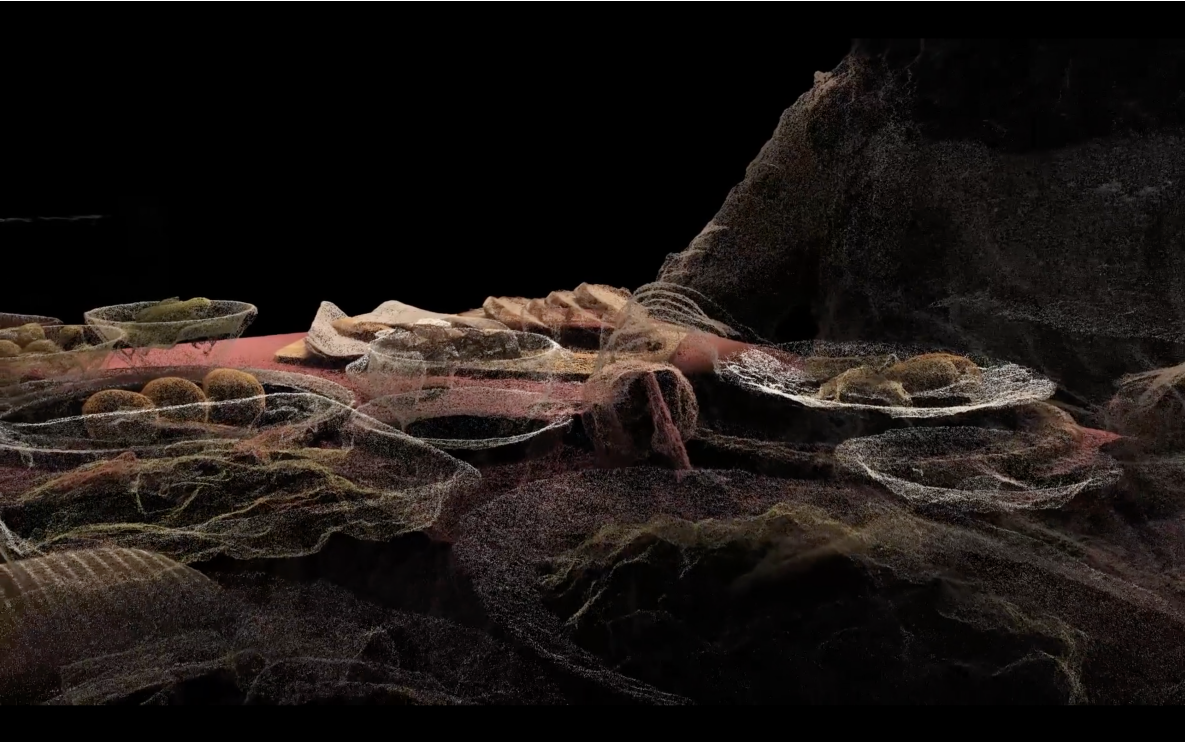
A highlight of the 2021 LA Art Show, DIVERSEartLA, curated by Marisa Caichiolo, is honored to present The UCLA Chicano Studies Research Center project, “Immersive Distancing,” by Los Angeles based artists Carmen Argote and Zeynep Abes, curated by Chon A. Noriega.

This exhibition will examine recent media art produced by Argote and Abes during the Covid-19 pandemic. Both artists draw upon multiple digital sources – video, photography and audio recordings – to address our cultural and political moment in relation to the body, memory, archival traces and the urban landscape. Immigration, as both personal experience and socio-political reality, also informs their vision. The process and content of these media works were directly impacted by Covid-19 restrictions, moving each artist to develop remote modes of working that blurred the line between production and post-production.

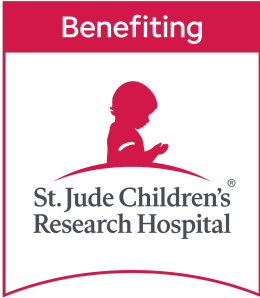


In “Last Light,” Argote draws from the sights and sounds of her walks through Los Angeles during the pandemic as the basis for a meditation on dis-ease and destruction. She proposes to measure her body in relation to the scale of the city and the world, while using the hand as the basis for establishing scale.

In “Memory Place,” Abes, who was born in Turkey, explores three moments in her “fraying certainty” about Istanbul as it becomes an idea more than a place, visualizing this process through point cloud data and photogrammetry that transform video and photographs into 3D environments that recede from the viewer.



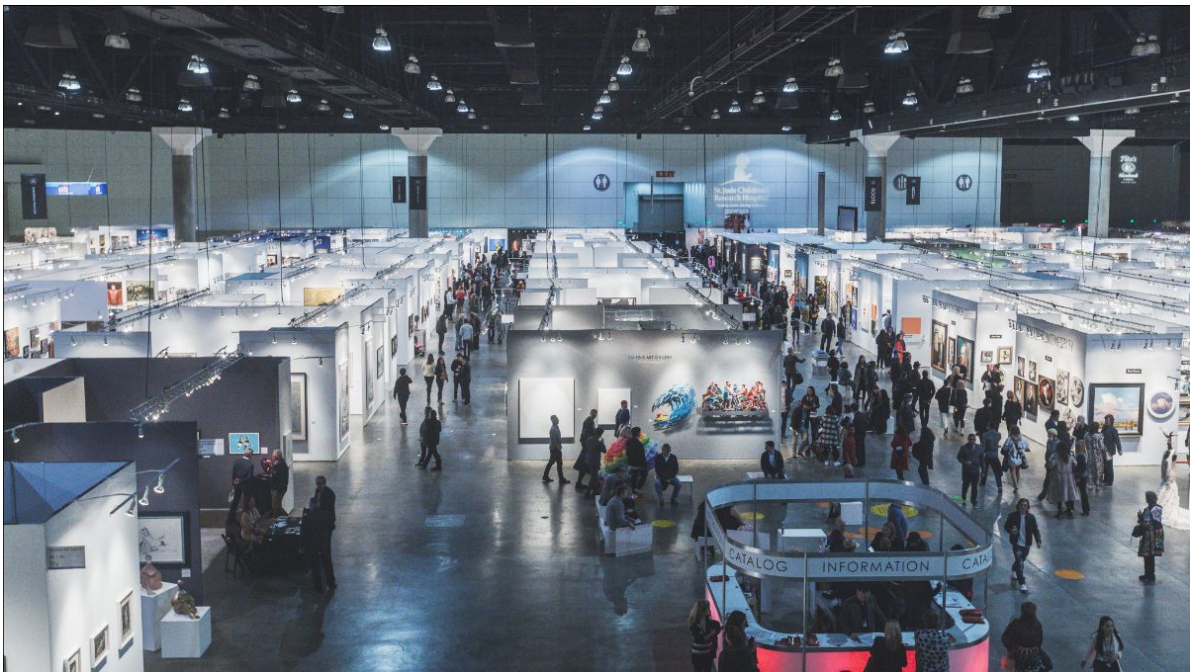
We are honored that St. Jude Children’s Research Hospital® will return for a seventh year as the exclusive Charity Partner of the LA Art Show in 2021. St. Jude Children’s Research Hospital® is leading the way the world understands, treats and defeats childhood cancer and other life-threatening diseases. The purpose of St. Jude is clear: Finding cures. Saving children.®



Follow the LA Art Show on Instagram



The LA Art Show returns July 29—August 1, 2021.
Follow us on **Instagram:** [@LAArtShow](https://www.instagram.com/LAArtShow) | **Hashtag:** #LAArtShow



Please join us when we return for the 2021 edition of the LA Art Show. The LA Art Show will run July 29—August 1, 2021 at the LA Convention Center, West Hall.



2020 PARTNERS

				<p>CULTURAL PARTNERS</p>	
					
					
<p>SHOW PARTNERS</p>		<p>MEDIA SPONSORS</p>		<p>CIVIC PARTNER</p>	
					
					

Copyright © 2021 LA Art Show, All rights reserved.

[Update or Unsubscribe](#)